



# MONTANA COAL BOARD

---

## COAL IMPACTED LOCAL GOVERNMENTAL UNITS DESIGNATION REPORT AS REQUIRED BY MCA 90-6-207

2023 BIENNIUM  
(JULY 1, 2021 – JUNE 30, 2023)

JANUARY 2023

We make every effort to ensure that our documents are fully accessible to persons with disabilities. Alternative, accessible formats of this document will be provided upon request.

For an alternate format please contact:

Montana Department of Commerce  
(406) 841-2770

Renee Lemon, Division Administrator  
Community Development Division  
Montana Department of Commerce  
301 S. Park Ave  
Helena, MT 59620

Analysis & Report Prepared by:  
Benjamin Gill, Economist

Research & Information Services Bureau  
Office of Tourism & Business Development  
Montana Department of Commerce

## TABLE OF CONTENTS

INTRODUCTION.....	4
DESIGNATION OF LOCAL GOVERNMENTAL UNITS .....	4
POPULATION INCREASE OR DECREASE <i>MCA 90-6-207(1)(a)</i> .....	4
NEW COAL DEVELOPMENT <i>MCA 90-6-207(1)(b)(i)</i> .....	4
INCREASED OR DECREASED COAL PRODUCTION <i>MCA 90-6-207(1)(b)(ii)</i> .....	4
NEW RAILROAD SERVICE <i>MCA 90-6-207(1)(b)(iii)</i> .....	5
AIR QUALITY PERMIT FOR A NEW COAL-BURNING FACILITY <i>MCA 90-6-207(1)(b)(iv)</i> .....	5
PROXIMITY TO A QUALIFYING COAL MINE OR COAL-BURNING FACILITY <i>MCA 90-6-207(1)(c)</i> .....	5
CESSATION OR SCHEDULED CESSATION OF MINING <i>MCA 90-6-207(1)(d)(i)</i> .....	5
CLOSURE OR SCHEDULED CLOSURE OF A COAL-BURNING FACILITY <i>MCA 90-6-207(1)(d)(ii)</i> .....	5
ADDITIONAL FACTORS <i>MCA 90-6-207(2)(a) and (b)</i> .....	6
LENGTH OF DESIGNATION <i>MCA 90-6-207(7)</i> .....	6
ANALYSIS METHODOLOGY .....	6
POPULATION CHANGE ANALYSIS .....	6
COAL PRODUCTION ANALYSIS .....	7
GEOSPATIAL ANALYSIS .....	7
RESULTS.....	7
DESIGNATION DUE TO INCREASED COAL PRODUCTION <i>MCA 90-6-207(1)(b)(ii)</i> .....	7
DESIGNATION DUE TO CESSATION OF COAL PRODUCTION <i>MCA 90-6-207(1)(d)(i)</i> .....	8
DESIGNATION DUE TO THE SCHEDULED CLOSURE OF A COAL-BURNING FACILITY <i>MCA 90-6-207(1)(d)(ii)</i> .....	8
DESIGNATION DUE TO DECREASED COAL PRODUCTION <i>MCA 90-6-207(1)(b)(ii)</i> .....	8
CONCLUSIONS .....	8
STATE AGENCIES CONTACTED & SOURCES USED.....	9
STATE AGENCIES & ENTITIES CONTACTED FOR INFORMATION.....	9
DATA SOURCES USED IN THE ANALYSIS FOR THIS REPORT .....	9
APPENDIX A. HISTORIC COAL PRODUCTION BY MINE .....	10
APPENDIX B. LIST OF DESIGNATED LOCAL GOVERNMENTAL UNITS.....	18

## **INTRODUCTION**

---

The Montana Department of Commerce (referred to as “Commerce”, hereafter) is required by statute (MCA 90-6-207) to biennially designate each county, incorporated city and town, school district or other governmental unit impacted by coal development. The specific criteria for designation are defined in detail within the statute and summarized below. This designation guides the use of funds and directs the Montana Coal Board (referred to as “Coal Board”, hereafter) to award at least 50% of appropriated funds to designated local government units, except as it pertains to 90-6-205(4)(b). This report is provided to the Coal Board for the purpose of awarding grants from available funds during the biennium.

In preparation of this report, Commerce collected relevant information from the Montana Department of Environmental Quality (DEQ), the Montana Department of Revenue (DOR), the Montana Department of Transportation (MDT), the Montana Local Government Services Bureau, the Montana Census and Economic Information Bureau (CEIC), and the Montana Department of Labor & Industry (DLI). These entities provided information, data and other assistance allowing Commerce to accurately review statutory priorities and finalize the biennial designations.

A complete list of local governmental units designated by Commerce can be found in Appendix B at the end of this report. The list also identifies which section of the statute was used to qualify the governmental unit as a designated entity by coal mine or coal-burning facility that had an event triggering eligibility. While the list only shows the designated entities, Commerce’s analysis included all local governmental units to determine if the entity met the statutory criteria for designation (more detail located in the “Analysis Methodology” later in this report).

## **DESIGNATION OF LOCAL GOVERNMENTAL UNITS**

---

To qualify under the statute, local governmental unit designation is established by reviewing the governmental units that meet the statutory guidelines explained in more detail below. It is noteworthy to mention that governmental units may have met the designation under one or more subsection; the specifics on how a local governmental unit was designated is included in the complete list of designees at the end of this report (Appendix B).

### **POPULATION INCREASE OR DECREASE**

*MCA 90-6-207(1)(a)*

Each county, incorporated city or town, school district, and other governmental unit shall be designated that has had or expects to have – as a result of coal development – a net increase or decrease in the estimated population of at least 10% over one of the 3-year periods defined in the statute. A detailed explanation of the specific 3-year time periods can be found in the “Analysis Methodology” section of this report.

### **NEW COAL DEVELOPMENT**

*MCA 90-6-207(1)(b)(i)*

Each county and all local governmental units within each county in which a mining permit has been granted by DEQ establishing a new coal mine to produce at least 300,000 tons a year and that Commerce determines will commence production within two years shall be designated.

### **INCREASED OR DECREASED COAL PRODUCTION**

*MCA 90-6-207(1)(b)(ii)*

Each county and all local governmental units within each county in which Commerce has determined the production of an existing coal mine will increase or decrease by at least 1 million tons per year and that the new, expanded, or reduced production will commence within 2 years of the designation shall be designated.

---

**NEW RAILROAD SERVICE**

*MCA 90-6-207(1)(b)(iii)*

Each county and all local governmental units within each county in which a newly constructed railroad serves a new, existing, or expanding coal mine shall be designated.

---

**AIR QUALITY PERMIT FOR A NEW COAL-BURNING FACILITY**

*MCA 90-6-207(1)(b)(iv)*

Each county and all local governmental units within each county in which DEQ has issued an air quality permit for a new steam-generating or other new coal-burning facility that would consume at least 1 million tons of Montana-mined coal a year and Commerce has determined construction or operation of the new facility will commence within 2 years shall be designated.

---

**PROXIMITY TO A QUALIFYING COAL MINE OR COAL-BURNING FACILITY**

*MCA 90-6-207(1)(c)*

Each local government unit located within 100 miles, measured over the shortest all-weather public road, of a mine or facility qualifying under subsection (1)(b)(i), (1)(b)(ii), or (1)(b)(iv) explained above shall be designated.

Due to the expected increase in coal production at the Signal Peak Mine and Spring Creek Mine, these two mines were used to designate local governmental units per this subsection. Additionally, due to the decrease in production at the Rosebud Mine, this mine was used to designate local governmental units per this subsection.

---

**CESSATION OR SCHEDULED CESSATION OF MINING**

*MCA 90-6-207(1)(d)(i)*

Each local government in which a mine that has produced 300,000 tons or more of coal a year has ceased all significant mining or is scheduled to cease within 1 year shall be designated.

The West Decker Mine located in Big Horn County did not produce any coal from calendar years 2019 through 2021. From 2000 through 2008, this mine produced an average of 7.5 million tons of coal per year. Therefore, West Decker Mine is considered to meet the qualifications of this subsection in “ceasing all significant mining”.

---

**CLOSURE OR SCHEDULED CLOSURE OF A COAL-BURNING FACILITY**

*MCA 90-6-207(1)(d)(ii)*

Each local government in which a steam-generating or other coal-burning facility that has operated under an air quality permit issued by DEQ and that has consumed at least 1 million tons of Montana-mined coal a year has closed or is scheduled to close within 1 year shall be designated.

On June 11<sup>th</sup>, 2019 Talen Energy published a press release – “Talen Montana, the operator of the Colstrip Steam Electric Station (“Colstrip”), announced that, effective December 31, [2019], the owners of Colstrip Units 1 and 2 (Talen Montana and Puget Sound Energy) will permanently retire the units, which have a total 614 megawatt capacity rating”. This closure of Units 1 and 2 meet the qualifications for designation under this subsection.

Recently, Montana Dakota Utility announced its intentions of closing the Lewis & Clark coal-fired power plant in Richland County. However, according to the DEQ that facility has never consumed at least 1 million tons of coal per year over the life of the plant. Therefore, the pending closure of this coal-burning facility does not meet the qualifications of this subsection.

Designation under subsection (1) of any local governmental unit extends to and includes the county in which it is located.

Designation of a county under subsection (1) extends to and includes as a designated unit any local governmental unit in the county that contains at least 10% of the county's total population.

Designation under subsection (1) refers to the criteria explained above in:

- Population Increase or Decrease
- New Coal Development
- Increased or Decreased Coal Production
- New Railroad Service
- Air Quality Permit for a New Coal-Burning Facility
- Proximity to a Qualifying Coal Mine or Coal-Burning Facility
- Cessation or Scheduled Cessation of Mining
- Closure or Scheduled Closure of a Coal-Burning Facility

---

**LENGTH OF DESIGNATION***MCA 90-6-207(7)*

All designations based on an increase in coal development or in the consumption of coal by a coal-using energy complex made under subsection (1)(a), (1)(b), or (1)(c) must be for 1 year. A designation may not continue after the Department of Commerce determines the mine, railroad, or facility that provided the basis for a designation is contributing sufficient tax revenue to the designated governmental unit to meet the increased costs of providing the services necessitated by the development of the mine, railroad, or facility.

---

**ANALYSIS METHODOLOGY**

Designation of local governmental units due to the impacts of coal development can occur by means of a few different scenarios described in the earlier "Designation of Local Governmental Units" section of this report. Below is an explanation of the methodological process and some of the data used to fulfill the statutory guidelines for designation.

---

**POPULATION CHANGE ANALYSIS**

If a governmental unit has experienced or expects to have – as a result of coal development – a net increase or decrease in population of at least 10% over a 3-year period, they may be designated as "impacted". MCA 90-6-207(1)(a) defines the time periods for which population change should be considered. Those 3-year time periods are:

- One consecutive 3-year period ending 2 calendar years prior to the current calendar year (2018-2020);
- One consecutive 3-year period ending 1 calendar years prior to the current calendar year (2019-2021);
- One consecutive 3-year period ending with the current calendar year (2020-2022);
- One consecutive 3-year period ending 1 calendar years after to the current calendar year (2021-2023); and
- One consecutive 3-year period ending 2 calendar years after to the current calendar year (2022-2024).

Available population estimates for Montana's local governmental units were used as the basis for this analysis. Estimates for all Montana counties and incorporated cities and towns from 2018 – 2020 were the most current data available. For elementary, high school, and unified school district data from 2018 – 2020 was the most

current available. Population estimates for Native American Reservations were not available on an annual basis; therefore, population change analysis could not be performed for Tribal areas.

For the purposes of this report, the “current calendar year” is defined to be calendar year 2022. For each governmental unit, the annual average change in prior year’s population was used to forecast future year populations in order to have a consistent time series of population data from which to perform analysis.

---

## **COAL PRODUCTION ANALYSIS**

---

The last three available calendar years (2019 – 2022) of coal production data for each Montana coal mine was analyzed to infer future coal development at each mine. If a coal mine had a one-year change of more than 1 million tons of coal production – either increase or decrease – Commerce extrapolated that observation and determined that mine met the qualifications in subsection 90-6-207(1)(b)(ii). Please refer to Appendix A for historic coal production data broken out by Montana mine.

---

## **GEOSPATIAL ANALYSIS**

---

All governmental units located within 100 miles – measured over the shortest all-weather public road – of a new coal mine, a new coal-burning facility, or a mine with an expected production increase or decrease of at least 1 million tons per year are designated as “impacted” (see “Proximity to a Qualifying Mine or Coal-Burning Facility” above).

Montana Code Annotated (15-70-101) defines all-weather roads as those open to public travel and considered all mileage (excluding the National Highway System (NHS) and Primary roadways) available for public use (except during periods of extreme weather or emergency conditions), passable by a two-wheel drive passenger car, and open to the general public without restrictive gates, prohibitive signs, or regulations other than restrictions based on the size and weight of the vehicle. Private ranch, farm, and residential driveways, primitive trails, and field approaches are not considered part of the mileage.

Using GIS software, geospatial analysis was performed utilizing the most current data available for the State’s road network (by road type), mine locations, and local governmental unit boundaries. State road network and local governmental unit boundary data was obtained from the Montana State Library. Mine locations were determined using aerial imagery to identify all weather access roads connecting mine buildings to the State’s road network. The closest point from the access road to the all-weather road network was used as a starting point for determining the 100-mile distance from the mine. Where multiple mine access roads were identified, the most direct route from the State road network to the mines’ buildings was used.

---

## **RESULTS**

---

The governmental units that met statutory priorities discussed in this report were designated based on an increase in mining production at two mines, a decrease in mining production at one mine, a cessation of coal production at another mine, and the closure of coal-burning facilities in Montana. The specifics of the triggering events and subsequent local governmental unit designations are detailed below.

---

### **DESIGNATION DUE TO INCREASED COAL PRODUCTION**

*MCA 90-6-207(1)(b)(ii)*

Based on the last couple years of data (See Appendix A), the Signal Peak Mine and Spring Creek Mine are both expected to see coal production increase by more than 1 million tons per year. Subsequently, all governmental units located within 100 miles from these mines are designated as “coal impacted”.

Because the designation of these governmental units is due to an *increase* in coal development, the designation is only guaranteed for 1 year. A designation may not continue after Commerce determines the mine, railroad, or facility that provided the basis for a designation is contributing sufficient tax revenue to the designated governmental unit to meet the increased costs of providing the services necessitated by the development of the mine, railroad, or facility. If the designated local governmental units can show they are not receiving “sufficient tax revenue... to meet the increased costs” then a designation continuance may be issued by Commerce for the remainder of the biennium.

A complete list of the local governmental units that were designated subject to these terms can be found in Appendix B of this report.

---

**DESIGNATION DUE TO CESSATION OF COAL PRODUCTION**

*MCA 90-6-207(1)(d)(i)*

From 2016 through 2022 the West Decker Coal Mine in Big Horn County has produced zero tons of coal. Historically, this coal mine has produced more than 300,000 tons a year. Therefore, each governmental unit in which the West Decker Mine is located is designated (for the biennium) as “coal impacted”. Per MCA 90-6-207(2)(b), all local governmental units located within Big Horn County that contain at least 10% of the county’s total population are also designated for the biennium.

A complete list of the local governmental units that are designated subject to these terms can be found in Appendix B of this report.

---

**DESIGNATION DUE TO THE SCHEDULED CLOSURE OF A COAL-BURNING FACILITY**

*MCA 90-6-207(1)(d)(ii)*

On June 11<sup>th</sup>, 2019 Talen Energy announced the coal-burning power plants Units 1 and 2 in Colstrip, MT (Rosebud County) were permanently retired effective December 31<sup>st</sup>, 2019. These plants began commercial operation in 1975 and 1976 annually consuming an average of more than 1 million tons of coal mined from the Rosebud Mine in Montana.

---

**DESIGNATION DUE TO DECREASED COAL PRODUCTION**

*MCA 90-6-207(1)(b)(ii)*

On average from 2016 – 2018, the Rosebud Mine located in Rosebud County produced 8.4 million tons of coal per year. The majority (85 percent) of coal produced at the Rosebud Mine is consumed by the four coal-fired power plants in Colstrip (Units 1 – 4). Due to the closure of Colstrip Units 1 and 2 along with the bankruptcy proceedings of the mine’s owner, Westmorland Rosebud Mine LLC, coal production at the Rosebud Mine decreased by more than 1 million tons per year within the next 3 years.

---

**CONCLUSIONS**

Designation of local governmental units under MCA 90-6-207 has changed pretty significantly compared to the 2021 biennial designations. Please refer to Appendix B of this report for a complete list of designated local governmental units for all or possibly a portion of the 2023 Biennium.



Commerce is available to further discuss details with any governmental unit that is or is not on the list in Appendix B to provide information about the analysis and how governmental units met the statutory qualifications detailed in this report.

## **STATE AGENCIES CONTACTED & SOURCES USED**

---

Multiple State agencies and bureaus were contacted for information that may be material to the designation of coal impacted local governmental units. Data used in the analysis completed for this report was sourced from various entities. All contacted agencies and data sources used for the creation of this report are listed below.

### **STATE AGENCIES & ENTITIES CONTACTED FOR INFORMATION**

---

Montana Department of Environmental Quality  
Montana Department of Revenue  
Montana Department of Transportation  
Montana Local Government Services Bureau  
Montana Department of Commerce, Census and Economic Information Bureau  
Montana Department of Labor & Industry

### **DATA SOURCES USED IN THE ANALYSIS FOR THIS REPORT**

---

Montana Department of Labor & Industry (DLI), Employment Relations Division, Safety and Health Bureau, Mining Section. Montana mine coal production data (through calendar year 2022).

Montana Legislative Services Division. Report to the Environmental Quality Council, *SJ 5: Coal in Montana Changing Times Challenging Times*. September 2018.

Montana State Library. State road network spatial files; local governmental unit spatial files.

Talen Energy. Public News Release June 11, 2019. *Colstrip Steam Electric Station Units 1 and 2 to Retire*.

US Census Bureau, Population Estimates Division. Midyear population estimates for states, counties, and incorporated cities and towns (2018 vintage). Released May 2019

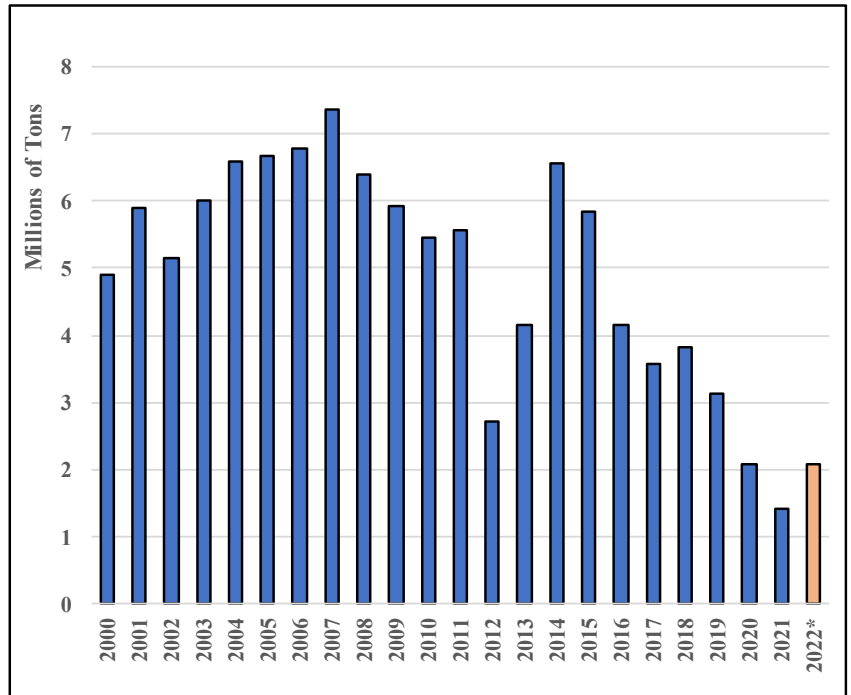
US Census Bureau, Small Area Income & Poverty Estimates. Population estimates for school districts (2016 vintage).

# APPENDIX A. HISTORIC COAL PRODUCTION BY MINE

## Absaloka Mine - Big Horn County

Annual Coal Production (tons)

Year	Annual Production	Annual Change	Annual Change (%)
2000	4,910,907	--	--
2001	5,904,724	993,817	20.2%
2002	5,160,921	(743,803)	-12.6%
2003	6,016,678	855,757	16.6%
2004	6,588,633	571,955	9.5%
2005	6,663,499	74,866	1.1%
2006	6,782,935	119,436	--
2007	7,347,794	564,859	--
2008	6,391,000	(956,794)	--
2009	5,911,688	(479,312)	-7.5%
2010	5,467,954	(443,734)	-7.5%
2011	5,557,604	89,650	1.6%
2012	2,714,063	(2,843,541)	-51.2%
2013	4,168,749	1,454,686	53.6%
2014	6,557,844	2,389,095	57.3%
2015	5,844,619	(713,225)	-10.9%
2016	4,157,548	(1,687,071)	-28.9%
2017	3,573,756	(583,792)	-14.0%
2018	3,827,634	253,878	7.1%
2019	3,129,243	(698,391)	-18.2%
2020	2,082,589	(1,046,654)	-33.4%
2021	1,434,771	(647,818)	-31.1%
2022*	2,086,533	651,762	45.4%



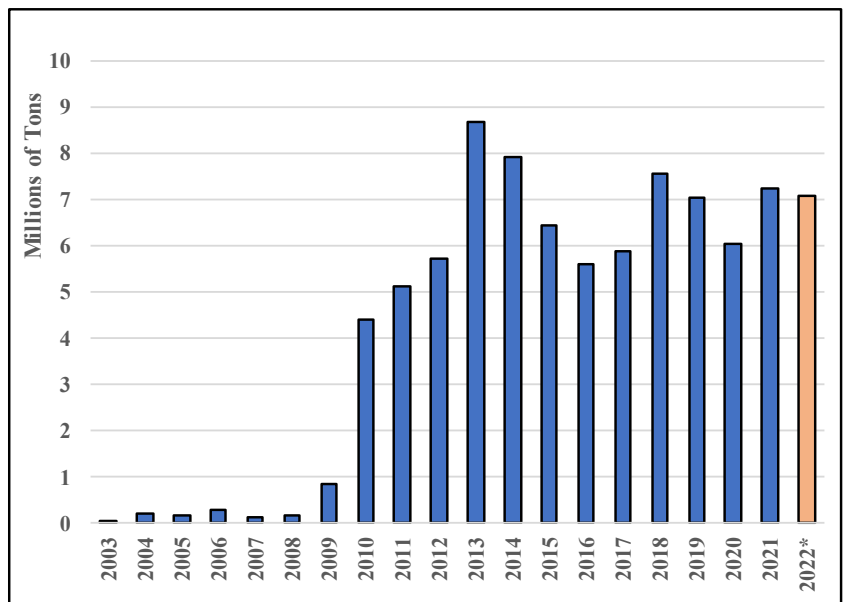
Source: Montana Department of Labor & Industry. Analysis by Montana Department of Commerce, Research & Information Services Bureau

\* 2022 only contains 11 months of data (January through November) due to data availability as of 1/27/2023.

## Bull Mountain Mine (formerly Signal Peak Mine) - Musselshell County

Annual Coal Production (tons)

Year	Annual Production	Annual Change	Annual Change (%)
2003	13,446	--	--
2004	208,755	195,309	1452.5%
2005	168,063	(40,692)	-19.5%
2006	286,712	118,649	--
2007	137,300	(149,412)	--
2008	186,750	49,450	--
2009	866,772	680,022	364.1%
2010	4,388,851	3,522,079	406.3%
2011	5,135,571	746,720	17.0%
2012	5,707,623	572,052	11.1%
2013	8,682,884	2,975,261	52.1%
2014	7,915,478	(767,406)	-8.8%
2015	6,419,640	(1,495,838)	-18.9%
2016	5,609,036	(810,604)	-12.6%
2017	5,883,956	274,920	4.9%
2018	7,566,483	1,682,527	28.6%
2019	7,019,128	(547,355)	-7.2%
2020	6,022,919	(996,209)	-14.2%
2021	7,246,556	1,223,637	20.3%
2022*	7,073,572	(172,984)	-2.4%



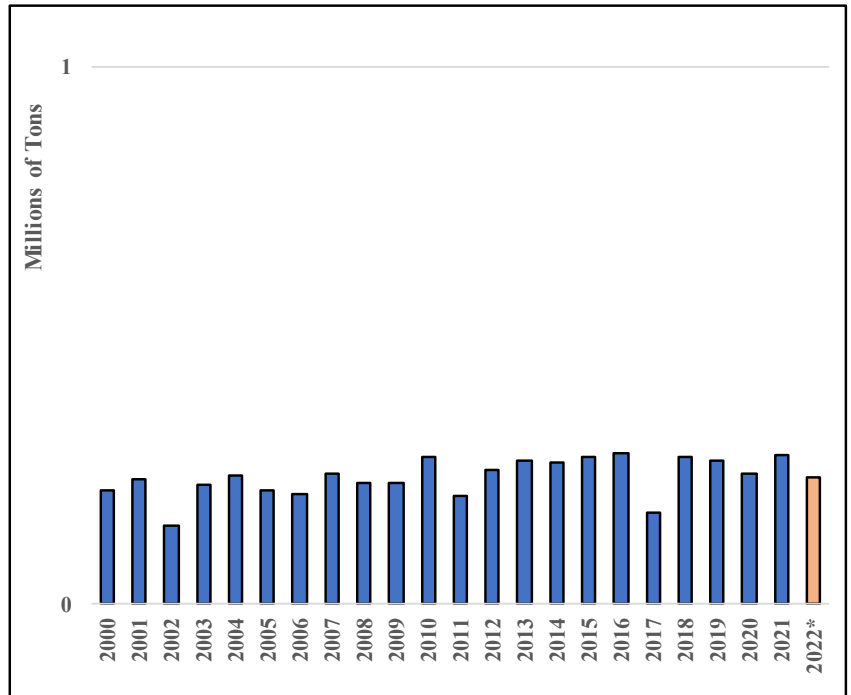
Source: Montana Department of Labor & Industry. Analysis by Montana Department of Commerce, Research & Information Services Bureau

\* 2022 only contains 11 months of data (January through November) due to data availability as of 1/27/2023.

## Celp Plant - Rosebud County

Annual Coal Production (tons)

Year	Annual Production	Annual Change	Annual Change (%)
2000	213,576	--	--
2001	231,829	18,253	8.5%
2002	148,439	(83,390)	-36.0%
2003	223,028	74,589	50.2%
2004	241,283	18,255	8.2%
2005	211,524	(29,759)	-12.3%
2006	203,914	(7,610)	--
2007	244,884	40,970	--
2008	226,070	(18,814)	--
2009	226,646	576	0.3%
2010	273,006	46,360	20.5%
2011	203,121	(69,885)	-25.6%
2012	248,691	45,570	22.4%
2013	267,282	18,591	7.5%
2014	264,055	(3,227)	-1.2%
2015	275,790	11,735	4.4%
2016	280,213	4,423	1.6%
2017	169,278	(110,935)	-39.6%
2018	273,477	104,199	61.6%
2019	269,236	(4,241)	-1.6%
2020	242,212	(27,024)	-10.0%
2021	278,537	36,325	15.0%
2022*	235,873	(42,664)	-15.3%



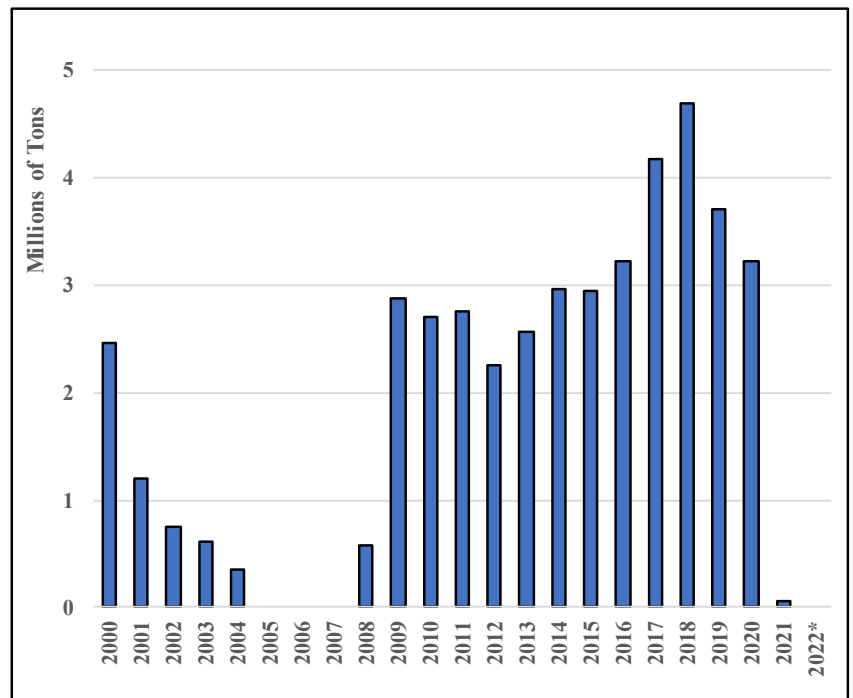
Source: Montana Department of Labor & Industry. Analysis by Montana Department of Commerce, Research & Information Services Bureau

\* 2022 only contains 11 months of data (January through November) due to data availability as of 1/27/2023.

## East Decker Mine - Big Horn County

Annual Coal Production (tons)

Year	Annual Production	Annual Change	Annual Change (%)
2000	2,465,352	--	--
2001	1,207,580	(1,257,772)	-51.0%
2002	746,967	(460,613)	-38.1%
2003	611,984	(134,983)	-18.1%
2004	355,142	(256,842)	-42.0%
2005	0	(355,142)	-100.0%
2006	0	0	--
2007	0	0	--
2008	581,306	581,306	--
2009	2,866,162	2,284,856	393.1%
2010	2,699,951	(166,211)	-5.8%
2011	2,749,367	49,416	1.8%
2012	2,247,873	(501,494)	-18.2%
2013	2,562,326	314,453	14.0%
2014	2,964,445	402,119	15.7%
2015	2,942,574	(21,871)	-0.7%
2016	3,225,895	283,321	9.6%
2017	4,175,084	949,189	29.4%
2018	4,688,914	513,830	12.3%
2019	3,701,222	(987,692)	-21.1%
2020	3,211,942	(489,280)	-13.2%
2021	61,688	(3,150,254)	-98.1%
2022*	0	(61,688)	-100.0%

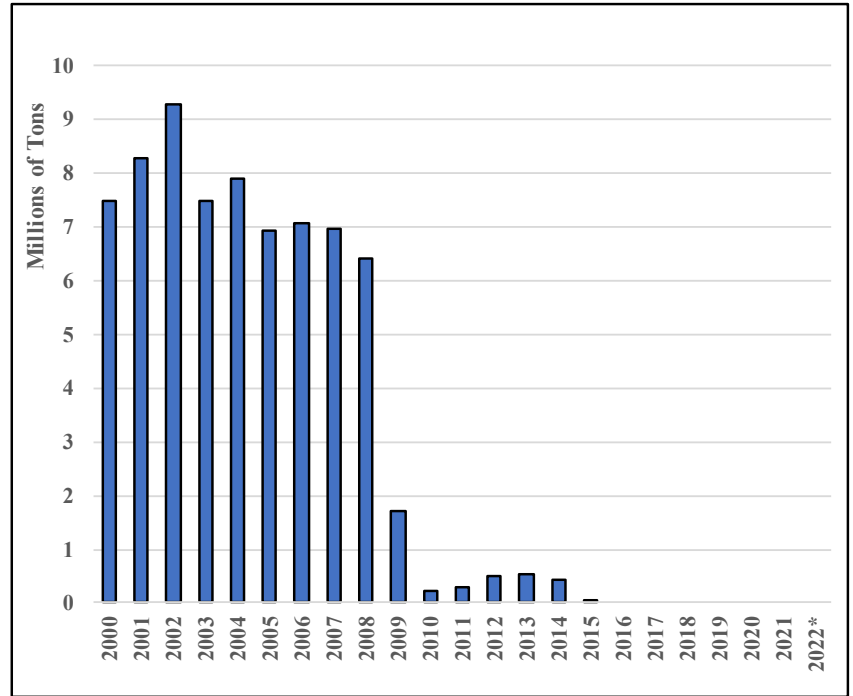


Source: Montana Department of Labor & Industry. Analysis by Montana Department of Commerce, Research & Information Services Bureau  
 \* 2022 only contains 11 months of data (January through November) due to data availability as of 1/27/2023.

## West Decker Mine - Big Horn County

Annual Coal Production (tons)

Year	Annual Production	Annual Change	Annual Change (%)
2000	7,466,814	--	--
2001	8,254,718	787,904	10.6%
2002	9,281,431	1,026,713	12.4%
2003	7,480,364	(1,801,067)	-19.4%
2004	7,886,137	405,773	5.4%
2005	6,915,690	(970,447)	-12.3%
2006	7,044,226	128,536	--
2007	6,972,909	(71,317)	--
2008	6,411,896	(561,013)	--
2009	1,720,374	(4,691,522)	-73.2%
2010	228,006	(1,492,368)	-86.7%
2011	295,575	67,569	29.6%
2012	484,570	188,995	63.9%
2013	545,037	60,467	12.5%
2014	419,092	(125,945)	-23.1%
2015	21,496	(397,596)	-94.9%
2016	0	(21,496)	-100.0%
2017	0	0	--
2018	0	0	--
2019	0	0	--
2020	0	0	--
2021	--	--	--
2022*	--	--	--



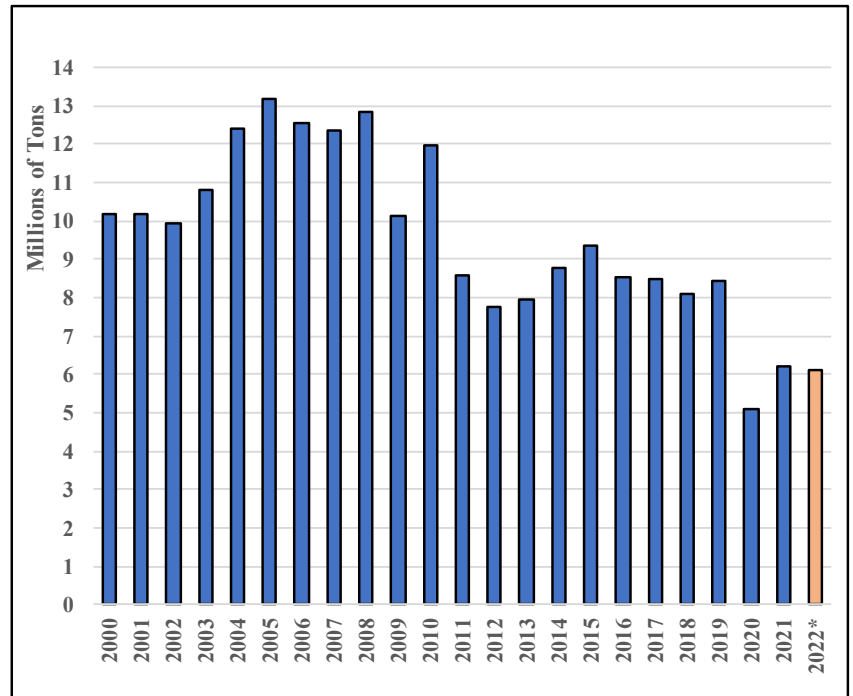
Source: Montana Department of Labor & Industry. Analysis by Montana Department of Commerce, Research & Information Services Bureau

\* 2022 only contains 11 months of data (January through November) due to data availability as of 1/27/2023.

## Rosebud Mine - Rosebud County

Annual Coal Production (tons)

Year	Annual Production	Annual Change	Annual Change (%)
2000	10,173,297	--	--
2001	10,151,692	(21,605)	-0.2%
2002	9,913,417	(238,275)	-2.3%
2003	10,779,695	866,278	8.7%
2004	12,413,482	1,633,787	15.2%
2005	13,164,977	751,495	6.1%
2006	12,527,789	(637,188)	--
2007	12,337,901	(189,888)	--
2008	12,826,742	488,841	--
2009	10,105,036	(2,721,706)	-21.2%
2010	11,957,340	1,852,304	18.3%
2011	8,581,708	(3,375,632)	-28.2%
2012	7,761,804	(819,904)	-9.6%
2013	7,966,848	205,044	2.6%
2014	8,754,406	787,558	9.9%
2015	9,350,194	595,788	6.8%
2016	8,532,276	(817,918)	-8.7%
2017	8,461,252	(71,024)	-0.8%
2018	8,119,283	(341,969)	-4.0%
2019	8,428,924	309,641	3.8%
2020	5,103,444	(3,325,480)	-39.5%
2021	6,218,742	1,115,298	21.9%
2022*	6,136,600	(82,142)	-1.3%



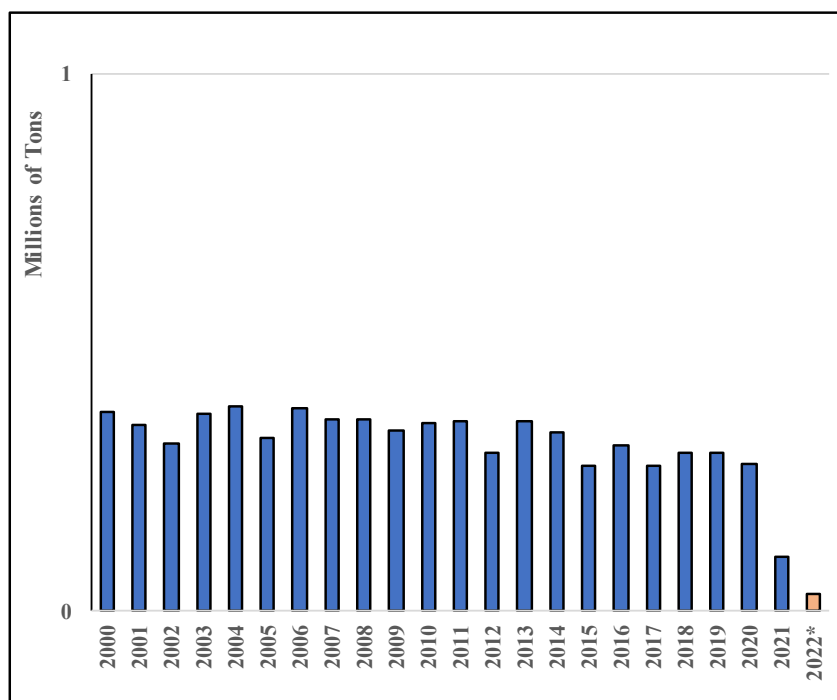
Source: Montana Department of Labor & Industry. Analysis by Montana Department of Commerce, Research & Information Services Bureau

\* 2022 only contains 11 months of data (January through November) due to data availability as of 1/27/2023.

## Savage Mine - Richland County

Annual Coal Production (tons)

Year	Annual Production	Annual Change	Annual Change (%)
2000	371,971	--	--
2001	346,355	(25,616)	-6.9%
2002	312,037	(34,318)	-9.9%
2003	368,867	56,830	18.2%
2004	380,042	11,175	3.0%
2005	323,536	(56,506)	-14.9%
2006	378,601	55,065	--
2007	358,395	(20,206)	--
2008	356,344	(2,051)	--
2009	337,061	(19,283)	-5.4%
2010	351,502	14,441	4.3%
2011	354,669	3,167	0.9%
2012	296,454	(58,215)	-16.4%
2013	354,184	57,730	19.5%
2014	333,922	(20,262)	-5.7%
2015	270,286	(63,636)	-19.1%
2016	309,144	38,858	14.4%
2017	272,663	(36,481)	-11.8%
2018	294,840	22,177	8.1%
2019	293,750	(1,090)	-0.4%
2020	274,389	(19,361)	-6.6%
2021	100,410	(173,979)	-63.4%
2022*	32,686	(67,724)	-67.4%



Source: Montana Department of Labor & Industry. Analysis by Montana Department of Commerce, Research & Information Services Bureau

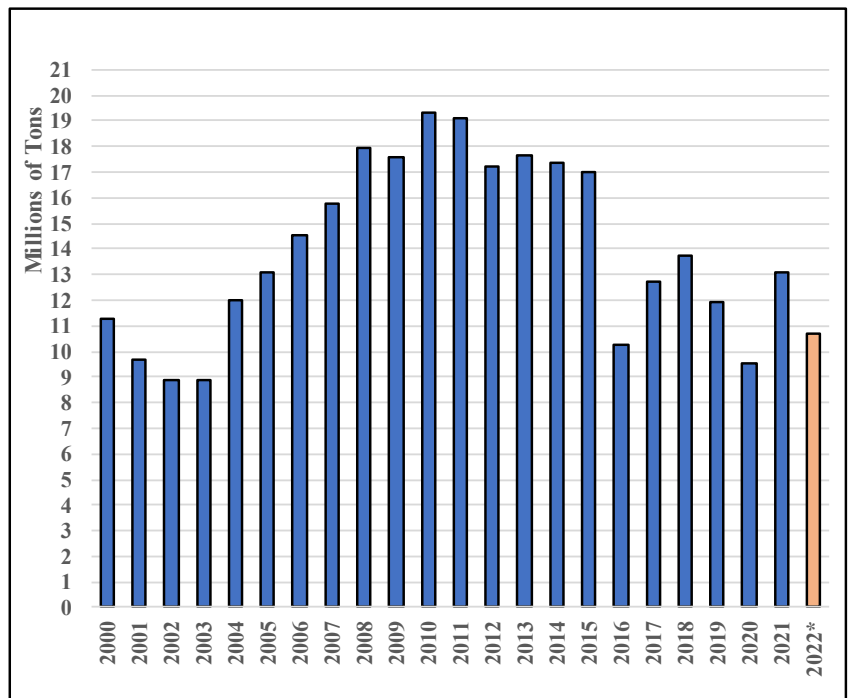
\* 2022 only contains 11 months of data (January through November) due to data availability as of 1/27/2023.



## Spring Creek Mine - Big Horn County

Annual Coal Production (tons)

Year	Annual Production	Annual Change	Annual Change (%)
2000	11,301,905	--	--
2001	9,664,969	(1,636,936)	-14.5%
2002	8,905,368	(759,601)	-7.9%
2003	8,894,014	(11,354)	-0.1%
2004	12,001,290	3,107,276	34.9%
2005	13,113,486	1,112,196	9.3%
2006	14,561,848	1,448,362	--
2007	15,773,724	1,211,876	--
2008	17,947,506	2,173,782	--
2009	17,608,969	(338,537)	-1.9%
2010	19,345,161	1,736,192	9.9%
2011	19,080,553	(264,608)	-1.4%
2012	17,200,109	(1,880,444)	-9.9%
2013	17,669,717	469,608	2.7%
2014	17,338,421	(331,296)	-1.9%
2015	16,987,414	(351,007)	-2.0%
2016	10,245,198	(6,742,216)	-39.7%
2017	12,725,355	2,480,157	24.2%
2018	13,759,894	1,034,539	8.1%
2019	11,928,833	(1,831,061)	-13.3%
2020	9,513,254	(2,415,579)	-20.2%
2021	13,095,743	3,582,489	37.7%
2022*	10,698,221	(2,397,522)	-18.3%



Source: Montana Department of Labor & Industry. Analysis by Montana Department of Commerce, Research & Information Services Bureau

\* 2022 only contains 11 months of data (January through November) due to data availability as of 1/27/2023.

## APPENDIX B. LIST OF DESIGNATED LOCAL GOVERNMENTAL UNITS

### APPENDIX B.

Local Governmental Unit Type	Local Governmental Unit Name	Qualifying MCA
<b>County</b>		
County	Big Horn County	MCA 90-6-207 (1)(b)(ii)
County	Carbon County	MCA 90-6-207 (1)(c) per (1)(b)(ii)
County	Carter County	MCA 90-6-207 (2)(a)
County	Custer County	MCA 90-6-207 (1)(c) per (1)(b)(ii)
County	Fergus County	MCA 90-6-207 (1)(c) per (1)(b)(ii)
County	Garfield County	MCA 90-6-207 (1)(c) per (1)(b)(ii)
County	Golden Valley County	MCA 90-6-207 (1)(c) per (1)(b)(ii)
County	Judith Basin County	MCA 90-6-207 (1)(c) per (1)(b)(ii)
County	Musselshell County	MCA 90-6-207 (1)(b)(ii)
County	Petroleum County	MCA 90-6-207 (1)(c) per (1)(b)(ii)
County	Powder River County	MCA 90-6-207 (1)(c) per (1)(b)(ii)
County	Richland County	MCA 90-6-207 (1)(d)(i)
County	Rosebud County	MCA 90-6-207 (1)(b)(ii)
County	Stillwater County	MCA 90-6-207 (1)(c) per (1)(b)(ii)
County	Sweet Grass County	MCA 90-6-207 (1)(c) per (1)(b)(ii)
County	Treasure County	MCA 90-6-207 (1)(c) per (1)(b)(ii)
County	Wheatland County	MCA 90-6-207 (1)(c) per (1)(b)(ii)
County	Yellowstone County	MCA 90-6-207 (1)(c) per (1)(b)(ii)
<b>Tribal Nation</b>		
Tribal Nation	Crow Tribe	MCA 90-6-207 (1)(b)(ii)
Tribal Nation	Northern Cheyenne Tribe	MCA 90-6-207 (1)(b)(ii)
<b>Incorporated City</b>		
Incorporated City	Big Timber city	MCA 90-6-207 (1)(c) per (1)(b)(ii)
Incorporated City	Billings city	MCA 90-6-207 (1)(c) per (1)(b)(ii)
Incorporated City	Colstrip city	MCA 90-6-207 (1)(b)(ii)
Incorporated City	Forsyth city	MCA 90-6-207 (1)(b)(ii)
Incorporated City	Hardin city	MCA 90-6-207 (1)(b)(ii)
Incorporated City	Harlowton city	MCA 90-6-207 (1)(c) per (1)(b)(ii)
Incorporated City	Judith Gap city	MCA 90-6-207 (1)(c) per (1)(b)(ii)

Incorporated City	Laurel city	MCA 90-6-207 (1)(c) per (1)(b)(ii)
Incorporated City	Lewistown city	MCA 90-6-207 (1)(c) per (1)(b)(ii)
Incorporated City	Miles City city	MCA 90-6-207 (1)(c) per (1)(b)(ii)
Incorporated City	Red Lodge city	MCA 90-6-207 (1)(c) per (1)(b)(ii)
Incorporated City	Roundup city	MCA 90-6-207 (1)(b)(ii)
Incorporated City	Sidney city	MCA 90-6-207 (2)(b)
Incorporated Town	Bearcreek town	MCA 90-6-207 (1)(c) per (1)(b)(ii)
Incorporated Town	Bridger town	MCA 90-6-207 (1)(c) per (1)(b)(ii)
Incorporated Town	Broadus town	MCA 90-6-207 (1)(c) per (1)(b)(ii)
Incorporated Town	Broadview town	MCA 90-6-207 (1)(c) per (1)(b)(ii)
Incorporated Town	Columbus town	MCA 90-6-207 (1)(c) per (1)(b)(ii)
Incorporated Town	Fromberg town	MCA 90-6-207 (1)(c) per (1)(b)(ii)
Incorporated Town	Grass Range town	MCA 90-6-207 (1)(c) per (1)(b)(ii)
Incorporated Town	Hysham town	MCA 90-6-207 (1)(c) per (1)(b)(ii)
Incorporated Town	Joliet town	MCA 90-6-207 (1)(c) per (1)(b)(ii)
Incorporated Town	Jordan town	MCA 90-6-207 (2)(b)
Incorporated Town	Lavina town	MCA 90-6-207 (1)(c) per (1)(b)(ii)
Incorporated Town	Lodge Grass town	MCA 90-6-207 (1)(b)(ii)
Incorporated Town	Melstone town	MCA 90-6-207 (1)(b)(ii)
Incorporated Town	Ryegate town	MCA 90-6-207 (1)(c) per (1)(b)(ii)
Incorporated Town	Stanford town	MCA 90-6-207 (2)(b)
Incorporated Town	Winnett town	MCA 90-6-207 (1)(c) per (1)(b)(ii)
<b>Elementary School District</b>		
Elementary School District	Absarokee Elementary School District	MCA 90-6-207 (1)(c) per (1)(b)(ii)
Elementary School District	Ashland Elementary School District	MCA 90-6-207 (1)(b)(ii)
Elementary School District	Ayers Elementary School District	MCA 90-6-207 (1)(c) per (1)(b)(ii)
Elementary School District	Biddle Elementary School District	MCA 90-6-207 (1)(c) per (1)(b)(ii)
Elementary School District	Big Timber Elementary School District	MCA 90-6-207 (1)(c) per (1)(b)(ii)
Elementary School District	Billings Elementary School District	MCA 90-6-207 (1)(c) per (1)(b)(ii)
Elementary School District	Birney Elementary School District	MCA 90-6-207 (1)(b)(ii)
Elementary School District	Blue Creek Elementary School District	MCA 90-6-207 (1)(c) per (1)(b)(ii)
Elementary School District	Broadus Elementary School District	MCA 90-6-207 (1)(c) per (1)(b)(ii)
Elementary School District	Broadview Elementary School District	MCA 90-6-207 (1)(b)(ii)
Elementary School District	Canyon Creek Elementary School District	MCA 90-6-207 (1)(c) per (1)(b)(ii)

Elementary School District	Cohagen Elementary School District	MCA 90-6-207 (1)(c) per (1)(b)(ii)
Elementary School District	Colstrip Elementary School District	MCA 90-6-207 (1)(b)(ii)
Elementary School District	Columbus Elementary School District	MCA 90-6-207 (1)(c) per (1)(b)(ii)
Elementary School District	Elder Grove Elementary School District	MCA 90-6-207 (1)(c) per (1)(b)(ii)
Elementary School District	Elysian Elementary School District	MCA 90-6-207 (1)(c) per (1)(b)(ii)
Elementary School District	Fairview Elementary School District	MCA 90-6-207 (2)(b)
Elementary School District	Fishtail Elementary School District	MCA 90-6-207 (1)(c) per (1)(b)(ii)
Elementary School District	Forsyth Elementary School District	MCA 90-6-207 (1)(b)(ii)
Elementary School District	Geyser Elementary School District	MCA 90-6-207 (2)(b)
Elementary School District	Grass Range Elementary School District	MCA 90-6-207 (1)(c) per (1)(b)(ii)
Elementary School District	Greycliff Elementary School District	MCA 90-6-207 (1)(c) per (1)(b)(ii)
Elementary School District	Hardin Elementary School District	MCA 90-6-207 (1)(b)(ii)
Elementary School District	Independent Elementary School District	MCA 90-6-207 (1)(c) per (1)(b)(ii)
Elementary School District	Joliet Elementary School District	MCA 90-6-207 (1)(c) per (1)(b)(ii)
Elementary School District	Jordan Elementary School District	MCA 90-6-207 (1)(c) per (1)(b)(ii)
Elementary School District	Judith Gap Elementary School District	MCA 90-6-207 (1)(c) per (1)(b)(ii)
Elementary School District	King Colony Elementary School District	MCA 90-6-207 (1)(c) per (1)(b)(ii)
Elementary School District	Kinsey Elementary School District	MCA 90-6-207 (1)(c) per (1)(b)(ii)
Elementary School District	Kircher Elementary School District	MCA 90-6-207 (1)(c) per (1)(b)(ii)
Elementary School District	Lame Deer Elementary School District	MCA 90-6-207 (1)(b)(ii)
Elementary School District	Laurel Elementary School District	MCA 90-6-207 (1)(c) per (1)(b)(ii)
Elementary School District	Lewistown Elementary School District	MCA 90-6-207 (1)(c) per (1)(b)(ii)
Elementary School District	Lodge Grass Elementary School District	MCA 90-6-207 (1)(b)(ii)
Elementary School District	Luther Elementary School District	MCA 90-6-207 (1)(c) per (1)(b)(ii)
Elementary School District	Melstone Elementary School District	MCA 90-6-207 (1)(b)(ii)
Elementary School District	Melville Elementary School District	MCA 90-6-207 (1)(c) per (1)(b)(ii)
Elementary School District	Miles City Elementary School District	MCA 90-6-207 (1)(c) per (1)(b)(ii)
Elementary School District	Molt Elementary School District	MCA 90-6-207 (1)(c) per (1)(b)(ii)
Elementary School District	Moore Elementary School District	MCA 90-6-207 (1)(c) per (1)(b)(ii)
Elementary School District	Morin Elementary School District	MCA 90-6-207 (1)(c) per (1)(b)(ii)
Elementary School District	Park City Elementary School District	MCA 90-6-207 (1)(c) per (1)(b)(ii)
Elementary School District	Pioneer Elementary School District	MCA 90-6-207 (1)(c) per (1)(b)(ii)
Elementary School District	Pryor Elementary School District	MCA 90-6-207 (1)(b)(ii)

Elementary School District	Rapelje Elementary School District	MCA 90-6-207 (1)(c) per (1)(b)(ii)
Elementary School District	Red Lodge Elementary School District	MCA 90-6-207 (1)(c) per (1)(b)(ii)
Elementary School District	Reed Point Elementary School District	MCA 90-6-207 (1)(c) per (1)(b)(ii)
Elementary School District	Ross Elementary School District	MCA 90-6-207 (1)(c) per (1)(b)(ii)
Elementary School District	Roundup Elementary School District	MCA 90-6-207 (1)(b)(ii)
Elementary School District	S H Elementary School District	MCA 90-6-207 (1)(c) per (1)(b)(ii)
Elementary School District	S Y Elementary School District	MCA 90-6-207 (1)(c) per (1)(b)(ii)
Elementary School District	Sand Springs Elementary School District	MCA 90-6-207 (1)(c) per (1)(b)(ii)
Elementary School District	Savage Elementary School District	MCA 90-6-207 (1)(d)(i)
Elementary School District	Shepherd Elementary School District	MCA 90-6-207 (1)(c) per (1)(b)(ii)
Elementary School District	Sidney Elementary School District	MCA 90-6-207 (2)(b)
Elementary School District	South Stacey Elementary School District	MCA 90-6-207 (1)(c) per (1)(b)(ii)
Elementary School District	Spring Creek Elementary School District (Big Horn County)	MCA 90-6-207 (1)(b)(ii)
Elementary School District	Spring Creek Elementary School District (Custer County)	MCA 90-6-207 (1)(c) per (1)(b)(ii)
Elementary School District	Trail Creek Elementary School District	MCA 90-6-207 (1)(c) per (1)(b)(ii)
Elementary School District	Wyola Elementary School District	MCA 90-6-207 (1)(b)(ii)
Elementary School District	Yellowstone Academy Elementary School District	MCA 90-6-207 (1)(c) per (1)(b)(ii)
<b>Secondary School District</b>		
Secondary School District	Absarokee High School District	MCA 90-6-207 (1)(c) per (1)(b)(ii)
Secondary School District	Billings High School District	MCA 90-6-207 (1)(c) per (1)(b)(ii)
Secondary School District	Broadview High School District	MCA 90-6-207 (1)(b)(ii)
Secondary School District	Colstrip High School District	MCA 90-6-207 (1)(b)(ii)
Secondary School District	Columbus High School District	MCA 90-6-207 (1)(c) per (1)(b)(ii)
Secondary School District	Custer County High School District	MCA 90-6-207 (1)(c) per (1)(b)(ii)
Secondary School District	Fairview High School District	MCA 90-6-207 (2)(b)
Secondary School District	Fergus High School District	MCA 90-6-207 (1)(c) per (1)(b)(ii)
Secondary School District	Forsyth High School District	MCA 90-6-207 (1)(b)(ii)
Secondary School District	Garfield County High School District	MCA 90-6-207 (1)(c) per (1)(b)(ii)
Secondary School District	Geyser High School District	MCA 90-6-207 (2)(b)
Secondary School District	Grass Range High School District	MCA 90-6-207 (1)(c) per (1)(b)(ii)
Secondary School District	Hardin High School District	MCA 90-6-207 (1)(b)(ii)
Secondary School District	Joliet High School District	MCA 90-6-207 (1)(c) per (1)(b)(ii)
Secondary School District	Judith Gap High School District	MCA 90-6-207 (1)(c) per (1)(b)(ii)
Secondary School District	Lame Deer High School District	MCA 90-6-207 (1)(b)(ii)

Secondary School District	Laurel High School District	MCA 90-6-207 (1)(c) per (1)(b)(ii)
Secondary School District	Lodge Grass High School District	MCA 90-6-207 (1)(b)(ii)
Secondary School District	Melstone High School District	MCA 90-6-207 (1)(b)(ii)
Secondary School District	Moore High School District	MCA 90-6-207 (1)(c) per (1)(b)(ii)
Secondary School District	Park City High School District	MCA 90-6-207 (1)(c) per (1)(b)(ii)
Secondary School District	Plenty Coups High School District	MCA 90-6-207 (1)(b)(ii)
Secondary School District	Powder River County High School District	MCA 90-6-207 (1)(c) per (1)(b)(ii)
Secondary School District	Rapelje High School District	MCA 90-6-207 (1)(c) per (1)(b)(ii)
Secondary School District	Red Lodge High School District	MCA 90-6-207 (1)(c) per (1)(b)(ii)
Secondary School District	Reed Point High School District	MCA 90-6-207 (1)(c) per (1)(b)(ii)
Secondary School District	Roundup High School District	MCA 90-6-207 (1)(b)(ii)
Secondary School District	Savage High School District	MCA 90-6-207 (1)(d)(i)
Secondary School District	Shepherd High School District	MCA 90-6-207 (1)(c) per (1)(b)(ii)
Secondary School District	Sidney High School District	MCA 90-6-207 (2)(b)
Secondary School District	Sweet Grass County High School District	MCA 90-6-207 (1)(c) per (1)(b)(ii)
<b>Unified School District</b>		
Unified School District	Belfry K-12 Schools	MCA 90-6-207 (1)(c) per (1)(b)(ii)
Unified School District	Bridger K-12 Schools	MCA 90-6-207 (1)(c) per (1)(b)(ii)
Unified School District	Custer K-12 Schools	MCA 90-6-207 (1)(c) per (1)(b)(ii)
Unified School District	Fromberg K-12	MCA 90-6-207 (1)(c) per (1)(b)(ii)
Unified School District	Harlowton K-12 Schools	MCA 90-6-207 (1)(c) per (1)(b)(ii)
Unified School District	Hobson K-12 Schools	MCA 90-6-207 (1)(c) per (1)(b)(ii)
Unified School District	Huntley Project K-12 Schools	MCA 90-6-207 (1)(c) per (1)(b)(ii)
Unified School District	Hysham K-12 Schools	MCA 90-6-207 (1)(c) per (1)(b)(ii)
Unified School District	Lavina K-12 Schools	MCA 90-6-207 (1)(c) per (1)(b)(ii)
Unified School District	Lockwood K-12	MCA 90-6-207 (1)(c) per (1)(b)(ii)
Unified School District	Roberts K-12 Schools	MCA 90-6-207 (1)(c) per (1)(b)(ii)
Unified School District	Rosebud K-12	MCA 90-6-207 (1)(b)(ii)
Unified School District	Roy K-12 Schools	MCA 90-6-207 (1)(c) per (1)(b)(ii)
Unified School District	Ryegate K-12 Schools	MCA 90-6-207 (1)(c) per (1)(b)(ii)
Unified School District	Stanford K-12 Schools	MCA 90-6-207 (2)(b)
Unified School District	Winnett K-12 Schools	MCA 90-6-207 (1)(c) per (1)(b)(ii)